

## CLYBOURN™ FILTRATION



### ⚠ CAUTION:

- Certified for use with clear drinking water only. DO NOT use with water that is microbiologically unsafe.
- After 1-2 days, discard and replace any unused drinking water with fresh drinking water.
- Product is NOT designed for hot liquids. Use only with cold liquids. DO NOT use with carbonated or pulpy beverages or with powdered drink mix.
- Operating Temperature Range: Min. 35°F/2°C (ice water) ~ Max. 85°F/29°C
- Prior to drinking, make sure the AUTOSEAL® lid is properly threaded to the body and screwed on completely.
- Avoid accidental depressing of the AUTOSEAL® button by keeping the button free and clear of other objects.
- DO NOT overfill. Fill liquid to the fill line on the outside of the bottle.
- DO NOT microwave or freeze.
- DO NOT use cleaners containing bleach, chlorine, abrasives, and/or harsh chemicals.
- When using the water bottle at high altitudes, such as during an airplane flight or when the bottle is exposed to prolonged hot temperatures, such as in an enclosed car, twist the lid a quarter turn to relieve pressure, then reseal the lid before use.

### FILTER CARE

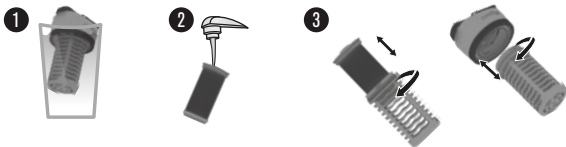
- Do not wash the filter cartridge in the dishwasher.
- Do not brush the filter cartridge, only rinse it with clean, cold water.
- Change filter cartridge after 80 gallons (4-6 months, assuming consumption of 50-85oz. per day) with Contigo® Replacement Filter Cartridge Model Number 1352812.
- Changes in taste or odor of filtered water indicate that the filter cartridge MUST be replaced.

### USAGE RECOMMENDATIONS

- For individual use only.
- Wash thoroughly before first use.
- All parts except the filter cartridge should be washed regularly.
- Fill bottle to fill line to avoid overflowing once filter housing is inserted.

### First Use of New Filter Cartridge:

1. **Soak New Filter Cartridge:** Unwrap filter cartridge and soak in cold, clean tap water for 10 minutes. DO NOT use soap on the filter cartridge. Filter cartridge should be fully submerged while soaking. \*For best results, screw filter cartridge into housing and attach housing to lid before soaking. \*\*If filter cartridge is dry and unused for a long period of time, allow the cartridge to re-soak before use or replace.
2. **Rinse New Filter Cartridge:** Rinse the filter cartridge under cold, clean tap water for 15 seconds.
3. **Assemble:** Insert filter cartridge into housing so that the lock icons are facing upwards. Twist filter cartridge clockwise to lock it into the housing. Then, screw assembled filter housing into lid until it clicks into place.

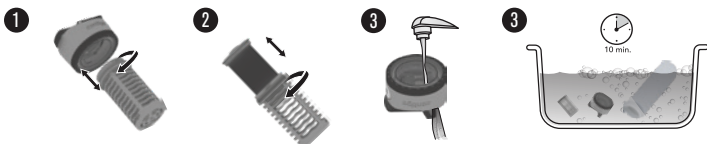


### CLEANING INSTRUCTIONS

- DO NOT wash or use soap on filter cartridge. You may rinse it with clean water. For new filter cartridge, follow soaking and rinsing instructions in First Use section.
- Lid and body are top-rack dishwasher safe once the filter cartridge is removed. Filter housing should be placed separately in the silverware basket.
- Wash all lid pieces thoroughly, either in the top-rack of a dishwasher or by hand.

### To wash by hand:

1. Remove filter housing from lid by twisting counter-clockwise.
  2. Unscrew filter cartridge from housing and set aside.
  3. Rinse lid immediately after each use with warm water, pressing the AUTOSEAL® button so water flows through the drink spout.
  4. Soak all pieces in warm soapy water for 10 minutes.
- ALWAYS STORE WITH LID REMOVED to allow all parts to dry completely.



### For a leak and spill-proof experience:

- After filling with water, twist lid clockwise to secure in place.



- The AUTOSEAL® lid is designed to help prevent leaks and spills from accidental tipping.
- Use the bottle's lock feature to avoid unintended depressing of the AUTOSEAL® button.



LOCKED



UNLOCKED

- DO NOT pull or rotate the spout shield as it may cause damage to the lid.

### PERFORMANCE DATA:

- This system has been tested according to NSF/ANSI 42 for reduction of the substances listed below. The concentration of the indicated substances in water entering the system was reduced to a concentration less than or equal to the permissible limit for water leaving the system, as specified in NSF/ANSI 42.
- Testing was performed under standard laboratory conditions, actual performance may vary.

TABLE 8.2

Substance	Influent Challenge Concentration	Reduction Requirement	Average Percent Reduction
Chlorine Taste & Odor	2.0 g/L ±10%	≥ 50%	87%
Particulate Class VI particles 50 to < 80 µm	At least 1,000 particles/mL	≥ 85%	98%



System Certified by WQA to NSF/ANSI Standard 42 for the reduction of Chlorine (taste and odor), and Particulates (Class VI), as verified and substantiated by test data.

Conforms to NSF/ANSI 42 for the specific performance claims as verified and substantiated by test data.

Made in China

Product of: Contigo Brands | Chicago, IL 60601 | [www.GoContigo.com](http://www.GoContigo.com)  
We would love to hear from you. | 1.888.262.0622

Get filter replacement reminders by visiting [GoContigo.com/filtration](http://GoContigo.com/filtration)

Filter manufactured for Contigo Brands by:  
SinoGlass Housewares Co., Ltd.  
26th Floor, East Tower, Triumph Plaza, 43 Dong Hai Xi Road  
QingDao, P.R. China 266071  
Tel: +86-532-80893179 Fax: +86-532-85723925  
E-mail: [ian@sinoglass.com](mailto:ian@sinoglass.com) Web Site: [www.sinoglass.com](http://www.sinoglass.com)

\*Limited lifetime guarantee for body and lid only applicable in US & Canada.  
See [GoContigo.com](http://GoContigo.com) for details.

